



EYEESEE SOLUTIONS™

BOTESCENTS™
Odorless Botanical Pesticide

FOR STRUCTURAL USE ONLY

USE SITES: In and around structures, including but not limited to: residential, multi-family, commercial, industrial, Municipal, institutional, retail, research, recreational, health care, educational, daycare, hospitality and agricultural buildings and other man-made structures

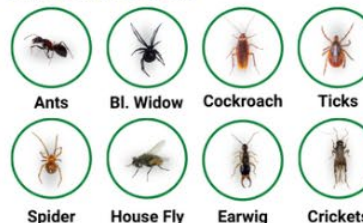
INGREDIENTS
Active Ingredients
Clove Oil.....5.00%
Inert Ingredients.....95.00%
Soap, Water
Total.....100%

8 oz (236.588 ML)

CAUTION: KEEP OUT OF REACH FROM CHILDREN SEE BACK PANEL FOR ADDITIONAL PRECAUTIONARY STATMENTS.

BOTESCENTS™
Odorless Botanical Pesticide

PROTECTS AGAINST



DIRECTIONS FOR MIXING

Shake well before mixing.

Mix 1-8 ounces of concentrate to 1 gallon of water. Shake or stir well. Spray evenly around structures. See chart below.

Programable Strength Range 1-8 oz	oz per Gallon	Insect Type Examples
Light Insect Strength	1-2 oz	Ants, Small House Spiders
Medium Insect Strength	3-5 oz	Crickets, Earwigs, Ticks, House Flies
Heavy Insect Strength	6-8 oz	Black Widows, Cockroaches

APPLICATION RATE:

1 gallon will cover approximately 550 sq ft



This product has not been registered by the United States Environmental Protection Agency. EyeSee Solutions represents that this product qualifies for exemption from registration under the Federal Insecticide Fungicide, and Rodenticide Act. FIFRA 25(b).

PRECAUTIONARY NOTICES

Use eye protection and chemical rated gloves. Avoid contact with eyes and skin. Thoroughly wash all food areas and food materials contacted with soap and water. Do not use near heat or open flame. Store in cool location out of direct sunlight. Do not freeze. Do not use product in conduits, junction boxes, or other electrical equipment because of possible shock hazard. Do not apply to food, feed or plants

FIRST AID

If in eyes, flush eyes with water for a minimum of 15-20 minutes. If on skin, wash skin with soap and water. If irritation persists contact a physician. Have the product container or label with you when calling a poison control center or doctor, or going in for treatment. Call poison control center hotline 1-800-222-1222 if over exposure occurs.

STORAGE AND DISPOSAL

Store in a cool, dry area away from heat or open flame. Do not reuse container. Dispose and trash.

QUESTIONS OR COMMENTS?

Toll Free +1 (833) 835-8525
www.eyeseesolutions.com

EyeSee Solutions
4031 Alvis Court, Rocklin, CA 95677